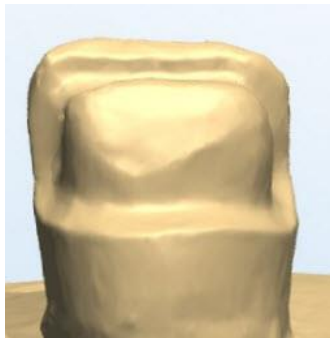


## Lengthening Mandibular Anterior Teeth

When altering the occlusal vertical dimension, it is often necessary to increase the length of the mandibular anterior teeth. This can effectively be done using composite resin instead of crowning as there is less tooth removal. The approach for this is to cut a three-quarter crown on the labial surface of the teeth to be restored, and using etching and bonding increase the length of the tooth to the desired height.

Occlusal adjustment is then required along with the polishing of the restorations. This often determines the length of the teeth. It is necessary to set the occlusion with a little space between the upper and lower incisors in centric, checked with shim stock. The lateral excursions need to be checked and simultaneous contact with all incisal edges is needed in protrusive excursion. This can be quite time consuming. A high polish is recommended. The completed restorations shown are 2 years old and any discrepancies can be repaired.



The three-quarter crown prep.



Before



After